

Single Cartridge Respirator

**ULTRAVUE, ULTRAELITE, MILLENNIUM OR
ADVANTAGE 3100 SINGLE PORT FACEPIECE**

Instructions for Use and Care

▲ WARNING

This manual, including the warnings and cautions inside, must be read and followed carefully by all persons who use or maintain this product, including those who have any responsibility involving its selection, application, service or repair. This respirator will perform as designed only if used and maintained according to the instructions. Otherwise, it could fail to perform as designed, and persons who rely on this product could sustain serious personal injury or death.

See separate insert for NIOSH Approval Information. (P/N 10035719)

See inside for Instructions, Warnings and Limitations. Please call 1-800-MSA-2222 during regular working hours.



MSA

Be Sure.
Choose MSA.

MINE SAFETY APPLIANCES COMPANY
PITTSBURGH, PENNSYLVANIA, U.S.A. 15230

DESCRIPTION

TABLE OF CONTENTS

NIOSH Approval Information	2	Preparations for Use	4
Special or Critical User Instructions	2	Attaching Cartridge	5
Respirator Use Limitations	3	Donning the Respirator	5
Exposure Limits	3	Test for Tightness Before Each Use	5
Respirator Fit Test	4	Removing the Respirator	7
General Description	4	Maintenance	7
Principle of Operation	4	Cleaning and Disinfecting	9

NIOSH APPROVAL INFORMATION

1. Protection

P100—Particulate Filter (99.97% filter efficiency level) effective against all particulate aerosols.

- AM - Ammonia
- CD - Chlorine dioxide (escape)
- CL - Chlorine
- FM - Formaldehyde
- HC - Hydrogen chloride
- HF - Hydrogen fluoride
- HS - Hydrogen sulfide (escape)
- MA - Methylamine
- OV - Organic Vapor
- SD - Sulfur dioxide
- SA - Supplied Air

2. Cautions and Limitations

- A. Not for use in atmospheres containing less than 19.5 percent oxygen.
- B. Not for use in atmospheres immediately dangerous to life or health.
- C. Do not exceed maximum use concentrations established by regulatory standards.
- H. Follow established cartridge and canister change schedules or observe ESLI to ensure that

cartridges and canisters are replaced before breakthrough occurs.

- J. Failure to properly use and maintain this product could result in injury or death.
- K. The Occupational Safety and Health Administration regulations require gas-proof goggles be worn with this respirator when used against formaldehyde.
- L. Follow the manufacturer's Users Instructions for changing cartridges and/or filters.
- M. All approved respirators shall be selected, fitted, used, and maintained in accordance with MSHA, OSHA, and other applicable regulations.
- N. Never substitute, modify, add, or omit parts. Use only exact replacement parts in the configuration as specified by the manufacturer.
- O. Refer to User's Instructions and/or maintenance manuals for information on use and maintenance of these respirators.
- P. NIOSH does not evaluate respirators for use as surgical

DESCRIPTION

masks.

- S. Special or critical user's instructions and/or specific use limitations apply. Refer to User's Instructions before donning.

S - SPECIAL OR CRITICAL USER INSTRUCTIONS

INSTRUCTIONS FOR USE AND CARE BY PROPERLY TRAINED AND QUALIFIED PERSONNEL

WARNING

1. This device does NOT supply oxygen, and must only be used in adequately ventilated areas containing at least 19.5 percent oxygen.
2. This respirator must be used in conjunction with the proper chemical or particulate cartridges for protection against specific contaminants.
3. Do not use when concentrations of contaminants are unknown or immediately dangerous to life or health (IDLH).
4. Do not use when appropriate exposure limit (OSHA PEL, NIOSH REL, ACGIH TLV, etc.) is not known.
5. Leave area immediately if:
 - A. Breathing becomes difficult.
 - B. Dizziness or other distress occurs.
 - C. You taste or smell contaminant.
 - D. You experience nose or throat irritation.
6. Use strictly in accordance with

instructions, labels, and limitations pertaining to this device.

7. This respirator may not provide a satisfactory seal with certain facial characteristics, such as beards or large sideburns, that prevent direct contact between the skin and the sealing surface of the facepiece. Do not use this respirator, if such conditions exist.
8. Never alter or modify this device.
9. This respirator is for use by trained, qualified personnel only.

Failure to follow the above warnings can result in serious personal injury or death.

WARNING

Do not use for urethane paints or other paints containing diisocyanates unless an appropriate cartridge change-out schedule is developed. Due to their poor warning properties, over exposure can occur without user awareness and result in severe permanent damage to the respiratory system. If unable to develop an appropriate change-out schedule, use an air-supplied respirator or SCBA.

RESPIRATOR USE LIMITATIONS

The wearer must comply with the following respirator use limitations:

1. MAXIMUM USE CONCENTRATION
 - Do not exceed any of the following:
 - A. 100 times the exposure limit for the contaminants present.

DESCRIPTION

- B. Immediately dangerous to life or health (IDLH) concentration for any contaminant present.
2. The limitations outlined in the applicable NIOSH approval.
 3. For respirators with class P filters: Replace filters when excessive breathing resistance occurs while inhaling.
 4. For respirators with chemical cartridges:
 - a. Users must follow an appropriate cartridge change-out schedule developed by a qualified professional. The change-out schedule must take into account all factors that may influence respiratory protection including specific work practices and other conditions unique to the works environment. Cartridges equipped with an end-of-service-life indicator for a specific contaminant present must be replaced when the indicator changes to the specified color or sooner if using the respirator against a mixture and the cartridge change-out schedule specifies an earlier replacement.
 - b. If using the respirator against substances having poor warning properties, over exposure can occur without user awareness. Take appropriate precautions to prevent over exposure, which may include an earlier cartridge change-out, or using an air-supplied respirator or SCBA. For further information, refer to MSA's Response Respirator Selector.
 - c. Replace cartridges every shift or sooner, if indicated by change-out schedule or end-of-service-life indicator. Use beyond one shift could result in shorter than expected service time and over exposure due to contaminant desorption and migration through the cartridge when not in use. If using the respirator for escape, replace cartridges after each escape. Once the user breathes through the respirator in a contaminated atmosphere, the cartridges may not provide adequate protection for additional escapes. Additionally, once the cartridges are initially placed into service or carried by the user in anticipation of escape, they must be replaced based on an appropriate cartridge change-out schedule. Extended exposure of the cartridges to nuisance levels (below the PEL) of the contaminant may prevent the cartridges from providing adequate escape protection.
 5. For respirators with combination cartridges (chemical cartridges with filters): The limitations specified above for chemical cartridges as well as the applicable filter class apply for combination cartridges.
 6. Applicable respirator use requirements as specified in the OSHA Respiratory Protection Regulation 29 CFR Part 1910.134 (or other requirements established by the Regulatory Agency with jurisdiction over the wearer). Additional OSHA Regulations may also apply for certain contaminants (See MSA's Response Respirator Selector).

DESCRIPTION

EXPOSURE LIMITS

A listing of acceptable exposure limits from the following sources is provided in MSA's Response® Respirator Selector:

- American Conference of Governmental Industrial Hygienists (ACGIH)
- Occupational Safety and Health Administration (OSHA)
- National Institute for Occupational Safety and Health (NIOSH)
- American Industrial Hygiene Association (AIHA)

EXPOSURE LIMITS FOR MIXTURES

NIOSH allows this respirator to be used for protection against a mixture of contaminants that are present simultaneously or used alternately against one contaminant then another (using the same cartridges or filters) if the mixture meets the following conditions:

- a. The cartridge/filter must be approved for all contaminants present.
- b. Contaminants present simultaneously must be below IDLH levels for the specific contaminants. If any one contaminant in the mixture exceeds the IDLH concentration, then the entire mixture must be treated as IDLH and the respirator cannot be used (except for escape from particulates with appropriate filter).

The American Conference of Governmental Industrial Hygienists (ACGIH) publishes the following infor-

mation to determine the TLV of a mixture (T_{Mixture}).

First determine the total concentration of the chemical mixture (C_{Mixture}) from the individual contaminant concentrations ($C_1, C_2, C_3...$) using the following formula:

$$C_{\text{Mixture}} = C_1 + C_2 + C_3 + \dots$$

The TLV of the mixture is found by using the following formula where T_1, T_2, T_3, \dots are the individual contaminant TLVs and $C_1, C_2, C_3...$ are the individual contaminant concentrations (T_{Mixture}).

$$T_{\text{Mixture}} = \frac{C_{\text{Mixture}}}{\frac{C_1}{T_1} + \frac{C_2}{T_2} + \frac{C_3}{T_3} + \dots}$$

Only use these equations if the contaminants present are actually mixed. Some substances do not mix and may be present separately, for example, in pockets or at different levels. In that case, the lowest TLV of the substances present must be used to determine the appropriate respirator category for protection against all contaminants present. See MSA's Response Respirator Selector for additional information.

RESPIRATOR FIT TEST

A qualitative or quantitative respirator fit test must be carried out for each wearer of this respirator to determine the amount of protection it will provide.

DESCRIPTION

Respirator fit tests are explained fully in the American National Standard for Respiratory Protection, ANSI Z88.2, which is published by the American National Standards Institute.

QUANTITATIVE TEST - If a Quantitative Fit Test is used, a fit factor that is at least 1000 shall be obtained before that respirator is assigned to an individual.

QUALITATIVE TEST - If a Qualitative Fit Test is used, only validated protocols are acceptable. The individual must pass a test designed to assess a fit factor of at least 1000.

Regardless of facial dimensions and respirator sizing charts, respirator fit testing, either qualitative or quantitative, must be performed to ensure the respirator selected provides an adequate fit.

WARNING

The user must perform a respirator fit test and follow all warnings and limitations specified. Failure to do so can result in serious personal injury or death.

GENERAL DESCRIPTION

The Single Cartridge Respirator is an air-purifying respirator intended for use in atmospheres which are not immediately dangerous to life or health (non-IDLH). This respirator is intended for applications which may require the user to enter or exit a hazardous area, or work within the area for a limited

time. The use of noseclip with Advantage 3100 facepiece is optional.

The Single Cartridge Respirator, when equipped with the appropriate cartridge(s), becomes a complete air-purifying respiratory protective device.

PRINCIPLE OF OPERATION

The Single Cartridge Respirator must be used with appropriate cartridge to provide respiratory protection. When the wearer inhales, the contaminated air is drawn through the air-purifying cartridge, which remove the hazardous vapors, gases and/or particulate matter, depending on the elements used. The inhalation valves open and the exhalation valve remains closed to prevent contaminated air from entering the facepiece. During exhalation, the exhalation valve opens and the inhalation valves close to prevent exhaled air from passing back through the air purifying elements. The exhalation valve permits exhaled air to exit the respirator.

PREPARATIONS FOR USE

The following inspection points must be checked before donning the respirator. A respirator that fails the inspection must not be used. The respirator must be repaired or replaced.

1. Headbands: Check to see that the headbands still have their elasticity. Inspect for cracks or tears and make sure all buckles are in place and working properly.

DESCRIPTION

2. Facepiece: Check facepiece for dirt, cracks, tears or holes. Inspect the shape of the facepiece for possible distortion that may occur from improper storage and make sure the rubber is flexible, not stiff.
3. Inhalation and exhalation valves: Check for cracks, tears, distortion, dirt or build-up of material between valve and valve seat.
4. Cartridge receptacle(s): Check to make sure gaskets are in place and check for cracks and damage.
5. Cartridges and/or filters: Make sure cartridges and/or filters are clean. Never try to clean a filter or cartridge by washing it or using compressed air. Inspect cartridges for dents, scratches or other damage, particularly the sealing surface.

DONNING THE RESPIRATOR

ATTACHING THE CARTRIDGE

Thread cartridge into receptacle carefully. Hand tighten to prevent damage to threads. To ensure a good seal, tighten cartridge by slowly turning the cartridge until tight.

DONNING ULTRAVUE, ULTRAELITE AND MILLENNIUM

Pull out headband straps, especially the "FRONT" or forehead strap(s), so that their ends are at the buckles, then grip facepiece between thumb and fingers. Insert chin well into the lower part of facepiece and pull headbands back over head. To obtain a firm and comfortable fit against the face at all points, adjust headbands as follows:

1. See that straps lie flat against head.
2. Tighten the lower or "Neck" straps.
3. Tighten the "SIDE" straps. (Do not touch forehead or "FRONT" strap.)
4. Place both hands on headband pad and push it towards the neck.
5. Repeat operations (2) and (3).
6. Tighten forehead or "FRONT" strap(s) a few notches if necessary.

DONNING THE ADVANTAGE 3100 RESPIRATOR WITH RUBBER HARNESS

1. Loosen the two bottom harness straps. Grip the straps by inserting thumbs through the straps. Insert chin well into the lower part of facepiece, then pull the harness

back over head.

2. Pull the back of harness downward toward the neck until centered at the back of your head. If necessary, hold the facepiece component housing with one hand and position the harness with the other hand, until obtaining a firm and comfortable fit against the face at all points.
3. Tighten the two neck-straps so that the mask is snug against face. Make sure the back of the harness is centered on the back of the head. The top two harness straps must be flat against the top of head.

Note: Both top straps should be adjusted with button in the same position so straps are equal in length.

4. If the mask does not feel snug up against face, loosen the bottom straps and reposition the back of the harness. Make sure that the back of the harness is positioned on the back of the head. If the mask does not become snug against the face, remove the mask and adjust the length of the top two straps.

To adjust top straps:

- Remove the strap from the button by pulling the loose end of the strap away from the button.
- Move the slide away from the lens ring to allow the strap to slide through the lens ring connection. Adjust the length of the strap. Secure the strap in position by pulling the strap onto the button.
- Smooth the straps so that they are

DONNING THE RESPIRATOR

flat. Move the slide so that it is located at the lens ring connection.

DONNING ADVANTAGE 3100 RESPIRATOR WITH PLASTIC HARNESS

INSTRUCTIONS TO DON THE MASK

Note: There are two recommended donning procedures.

Donning Procedure A

1. Completely loosen the two bottom straps. Spread the straps of the head harness with both hands and place chin into the mask. Pull harness over head all the way, until plastic cradle lies flat on back of head.
2. Tighten neck straps evenly so that the mask is snug against the face.
3. If necessary, adjust the mask and tighten harness by pulling loop on the back of harness.

Donning Procedure B

1. Completely loosen the two bottom straps, insert fingers and hold the loop on the back of the harness.
 2. Place chin into the mask.
 3. Pull the harness over head with the loop, pull harness down to the back of the head, until plastic cradle lies flat on back of head.
 4. Tighten neck straps evenly so that the mask is snug against your face.
-

TEST FOR TIGHTNESS BEFORE EACH USE

The respirator must pass tightness tests before the respirator can be

used. The respirator will not furnish protection unless all inhaled air is drawn through suitable cartridges or filters. The respirator must be subjected to a Tightness Test before each use by one of the following Methods:

A. Positive Pressure Method

Test for respirator for leakage using a positive pressure method. Lightly cover the exhalation valve cover. Gently exhale. A slight positive pressure should build up inside the respirator. If any leakage is detected around the facial seal, readjust head harness straps and repeat test until there is no leakage. If other than facial seal leakage is detected, the condition must be investigated and corrected before another test is made.

B. Negative Pressure Method

A Negative pressure test may also be performed. Lightly cover cartridge. Gently inhale and the face-piece should collapse against the face. If any leakage is detected around the facial seal, readjust head harness straps and repeat the test until there is no leakage. If other than facial seal leakage is detected, investigate and correct the condition before testing again. The respirator must be subjected to the Tightness Test before each use.

The respirator must pass one of the tightness tests above before the respirator is used. The respirator will not furnish protection unless all inhaled air is drawn through suitable cartridges.

DONNING THE RESPIRATOR

⚠ WARNING

Do not enter any atmosphere with this respirator unless you know that:

1. You have read, understood and followed all instructions and warnings pertaining to the respirator.
2. The respirator and conditions meet the requirements outlined.
3. The cartridge is the proper type for the contaminant or contaminants present.
4. The amount of oxygen is suffi-

cient to support life (that is, at least 19.5 percent oxygen by volume at sea level). Do not use if an oxygen concentration sufficient to support life is questionable.

5. Respirator does not leak (see Test for Tightness).
6. Cartridge does not need to be replaced. Discard exhausted cartridge.

Failure to follow the above warnings can result in serious personal injury or death.

REMOVING THE RESPIRATOR

REMOVING THE RESPIRATOR

Return to an uncontaminated area before removing the respirator. Check that the respirator and your clothing are free from contaminant before removing the respirator.

To remove the facepiece

1. Push the bottom buckles forward to loosen and fully extend the bottom straps.
2. Insert thumbs under the bottom harness straps. Pull it up and away from face.

To replace cartridge proceed as follows:

1. Remove the expended cartridge and discard.
2. Remove the replacement cartridge from storage bag and insert into the threaded receptacle making sure gasket is in place.
3. Carefully hand tighten the cartridge

to prevent damage to threads. To ensure a good seal, tighten cartridge by slowly turning the cartridge until tight.

MAINTENANCE

This respirator must be kept in good condition to function properly. When any respirator shows evidence of excessive wear or damage, it must be replaced immediately. Refer to the Preparations for Donning section for proper inspection of the respirator. This respirator, when not in use, should be stored in a clean dry location, such as its storage bag. Do not distort the facepiece during storage. When disposing of the respirator or its components, do so in accordance with local, state and federal regulations.

CLEANING AND DISINFECTING

CLEANING AND DISINFECTING

Respirators should be cleaned and disinfected after each use. MSA recommends using Confidence Plus™ Cleaning Solution (P/N 10009971), a germicidal cleaner that cleans and disinfects in one operation. Refer to the Cleaning Solution label for use instructions. A solution as effective as Confidence Plus™ Cleaning Solution and compatible with MSA respirator components may be substituted.

⚠ CAUTION

Alcohol should not be used as a germicide because it may deteriorate rubber parts.

⚠ CAUTION

If not rinsed thoroughly, cleaning agent residue may irritate the wearer's skin.

⚠ CAUTION

Do not force-dry the parts by placing them in a heater or direct sunlight. This will cause the rubber to deteriorate.

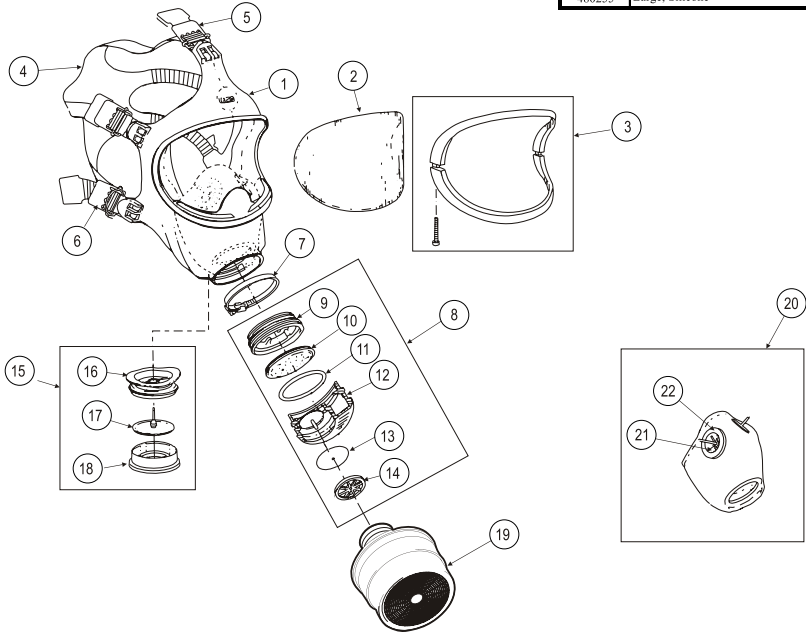
1. If the respirator is to be cleaned, remove the cartridges. The face-piece should be cleaned and disinfected after every use.
2. Preparing the cleaner. Follow the instructions provided with the Confidence Plus™ Cleaning Solution or equivalent cleaning solution.
3. Rinse thoroughly in plain warm water (110°F to avoid possible overheating and distortion of parts) and then air dry. ANSI suggests that users should be trained in cleaning procedure.

⚠ CAUTION

Cleaning and Disinfecting at or below 110°F temperature will avoid possible overheating and distortion of parts which would require replacement.

demand facepiece

Ultravue Facepiece Assemblies	
Item	Description
471218	Small, Hycar
457126	Medium, Hycar
471230	Large, Hycar
480251	Small, Silicone
480247	Medium, Silicone
480255	Large, Silicone



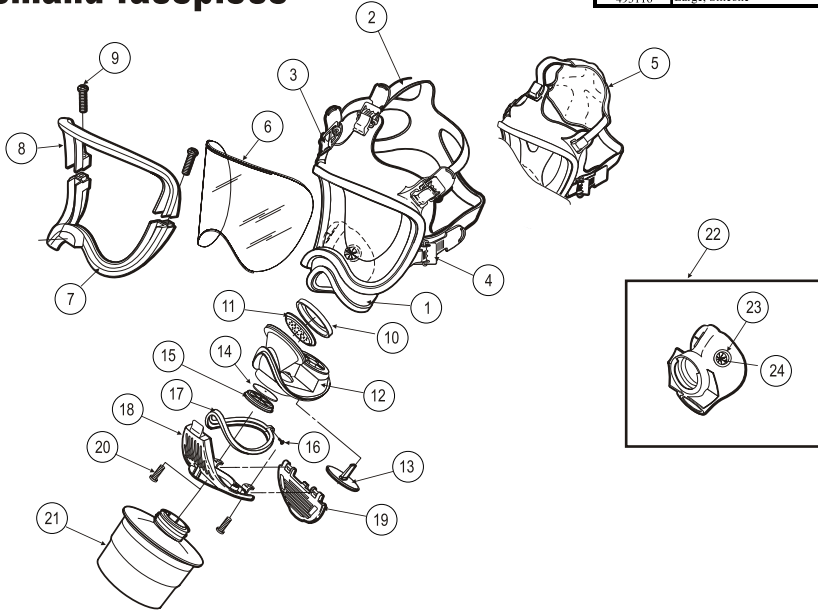
Ultravue Facepiece Components			Ultravue Facepiece Components		
Item No.	Part No.	Description			
1	471577	Small, Faceblank Hycar	10	*	Speaking Diaphragm (Flat Side Toward Retainer Ring)
	468084	Medium, Faceblank Hycar	11	*	O-Ring
	471580	Large, Faceblank Hycar	12	*	Housing
	480224	Small, Faceblank Silicone	13	*	Inlet Valve
	480223	Medium, Faceblank Silicone	14	*	Inlet Valve Spider
	480225	Large, Faceblank Silicone	15	462865	Exhalation Valve Assembly
2	96677	Lens	16	*	Exhalation Valve Body
3	471249	Small Lens Ring (Gray)	17	*	Exhalation Flapper Valve
	464358	Medium Lens Ring (Black)	18	*	Exhalation Valve Cover
	471250	Large Lens Ring (Gold)	Cartridges		
4	458173	Harness	19	10024847	GME-P100 Single Cartridge, 6 per package
5	96662	Buckle (3 Req'd)	Accessories		
6	457190	Buckle With "D" Ring (2 Req'd)	20	471710	Small Nosecup
7	458212	Clamp		471711	Medium Nosecup
8	488609	Inlet Assembly		471712	Large Nosecup
9	*	Retainer Ring	21	804823	Valve Disk
			22	804822	Valve Seat

* Item Available in Kit

Ultra Elite®

demand facepiece

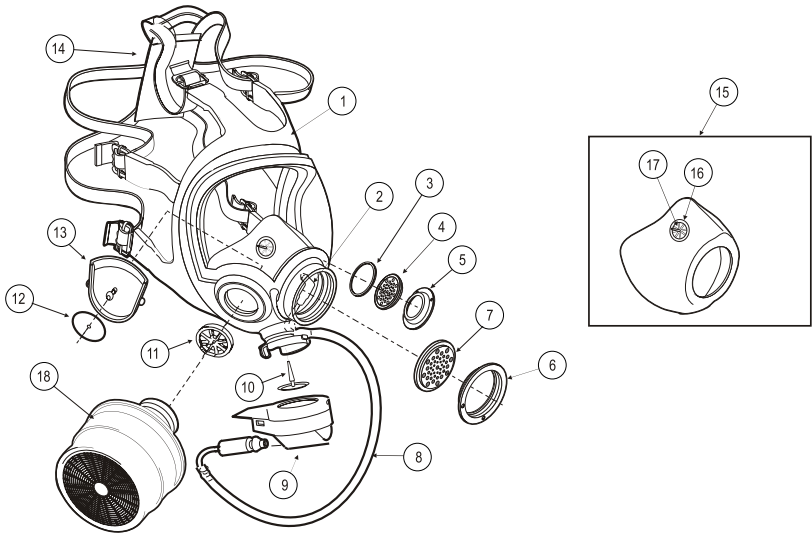
UltraElite Facepiece Assemblies	
Part No.	Description
493064	Small, Hycar
493020	Medium, Hycar
493108	Large, Hycar
493072	Small, Silicone
493028	Medium, Silicone
493116	Large, Silicone



UltraElite Facepiece Components			UltraElite Facepiece Components		
Item	Part No.	Description	Item	Part No.	Description
1	491028	Small, Faceblank, Hycar	16	804812	Component Housing Ring Screw
	490138	Medium, Faceblank, Hycar	17	804811	Component Housing Ring
	491039	Large, Faceblank, Hycar	18	809840	Cover, Component Housing
	491388	Small, Faceblank, Silicone	19	804844	Door, Component Housing
	491387	Medium, Faceblank, Silicone	20	804821	Component Housing Ring Screw
	491389	Large, Faceblank, Silicone	Cartridge		
2	804830	Rubber Harness (With Buckles)	21	10024847	GME-P100 Single Cartridge (6 per package)
3	804828	Buckle Assembly (3 Req'd)	Accessories		
4	804807	Buckle Assembly With D-Ring	22	810412	Nosecup Medium (With Valves)
5	805016	E-Z Don Harness, Small (With Buckles)		810413	Nosecup Large (With Valves)
	805015	E-Z Don Harness, Medium (With Buckles)	23	804822	Nosecup Valve Seat
	805017	E-Z Don Harness, Large (With Buckles)	24	804823	Nosecup Valve Disc
6	805019	Lens Hardcoat	Not Shown	804638	Spectacle Kit with Wrap Around Wire
7	805595	Lower Lens Ring	Not Shown	493581	Spectacle Kit with Center Bar
8	805594	Upper Lens Ring	Not Shown	491500	Cover Lens, Clear, 25 per package
9	804806	Lens Ring Screw	Not Shown	805456	Cover Lens, Tinted, 25 per package
10	804808	Speaking Diaphragm Retainer	Not Shown	10024074	ClearCommand Amplifier Kit
11	804809	Speaking Diaphragm	Not Shown	10024073	ClearCommand Amplifier Radio Interface Kit
12	804010	Component Housing	Not Shown	10023055	ClearCommand Bracket and Voicemitter Kit
13	804832	Exhalation Valve	Not Shown	806168	Vari-Clear Personal Communication System
14	804813	Inlet Disc			
15	805811	Valve Spider			

Millennium[®]

Millennium Facepiece Assemblies	
Part No.	Description
10007423	Small
10007422	Medium
10007424	Large

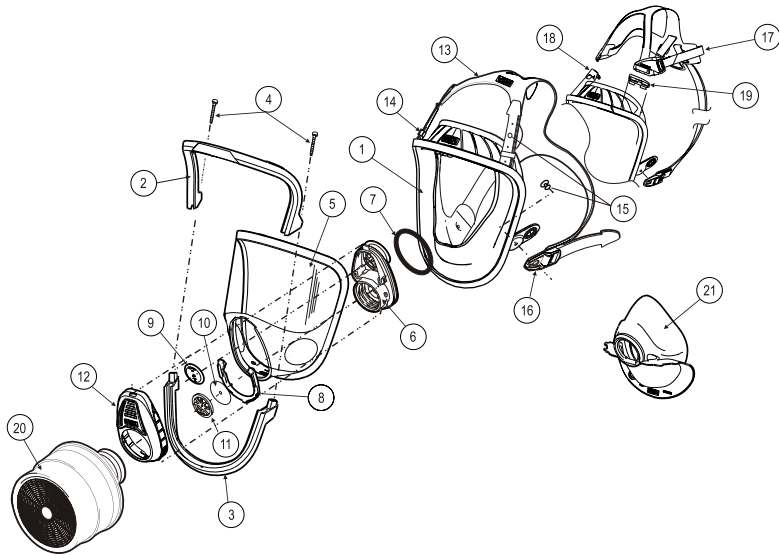


Millennium Facepiece Components			Millennium Facepiece Components		
Item No.	Part No.	Description	Item No.	Part No.	Description
1	10006591	Small, Faceblank Lens Assembly	15	10006824	Small, Nosecup
	10006590	Medium, Faceblank Lens Assembly		10006823	Medium, Nosecup
	10006592	Large, Faceblank Lens Assembly		10006825	Large, Nosecup
2	10008189	Internal Drinking Tube	16	491124	Nosecup, Valve Seat
3	10007979	Voice-mitter Side Gasket	17	491125	Valve Seat
4	805343	Side Voice-mitter	Cartridges		
5	10007991	Speaking Diaphragm Retaining Ring	18	10024847	GME-P100 Single Cartridge (6 Per Package 10024850)
6	805111	Metal Retaining Ring	Accessories and Optional Components		
7	805103	Speaking Diaphragm	Not Shown	10008907	Lens Outsert, Small, Clear
8	10008191	External Drinking Tube	Not Shown	10088906	Lens Outsert, Medium/Large, Clear
9	10007997	Exhalation Valve Cover	Not Shown	10008909	Lens Outsert, Small, Tinted
10	10007996	Exhalation Valve	Not Shown	10008908	Lens Outsert, Medium/Large, Tinted
11	10007994	Spider Gasket	Not Shown	816137	Spectacle Kit
12	10007421	Inhalation Valve	Not Shown	10026265	ESP II Communication System
13	10007388	Deflector			
14	10008587	Head Harness			

Advantage[®] 3000

model 3100 single port

Advantage 3100 Facepiece Assemblies	
Part No.	Description
10028999	Small with Rubber Harness
10028998	Medium with Rubber Harness
10029000	Large with Rubber Harness
10031343	Small with Advantage (Plastic) Harness
10031342	Medium with Advantage (Plastic) Harness
10031344	Large with Advantage (Plastic) Harness



Advantage 3100 Facepiece Components			Advantage 3100 Facepiece Components		
Item No.	Part No	Description	Item No.	Part No	Description
1	10025280	Small, Faceblank Silicone	14	*	2 - Slide
	10025258	Medium, Faceblank Silicone	15	*	4 - Harness Button
	10025259	Large, Faceblank Silicone	16	*	2 - Buckle
-Kit-	10030785	Lens Ring Kit	14	10030797	Slide for Classic Rubber Harness, 10 per Package
2	*	1 - Upper Lens Ring	15	10030795	Harness Button, 12 per Package
3	*	1 - Lower Lens Ring	16	10030796	Buckle for Classic Rubber Harness, 6 per Package
4	*	2 - Lens Ring Screw	-Kit-	10030798	Advantage (Plastic) Harness Kit
5	10025282	Single Port Lens	17	*	1 Advantage Harness
-Kit-	10030791	Single Port Housing Replacement Kit	18	*	1 Right Adapter Clip
6	*	1 - Single Port Housing	19	*	1 Left Adapter Clip
7	*	1 - O-ring	Cartridge		
8	*	1 - Retainer Clip	20	10024847	GME-P100 Single Cartridge, 6 per Package
9	10030789	Exhalation Valve, 6 per Package	Accessories		
10	10030788	Inhalation Valve, 10 per Package	21	10030792	Medium/Large Nose Cup
11	10025292	Spider Gasket		10030793	Small Nose Cup
12	10025291	Cover	Not Shown	10029298	Spectacle Kit
-Kit-	10030794	Classic Rubber Harness Kit	Not Shown	10031542	Cover Lens, Clear, 25 per Package
13	*	1 - Rubber Harness	Not Shown	10031543	Cover Lens, Smoke, 25 per Package

* Item Available in Kit